

VERTICAL POSTER

USER MANUAL
Ref 02 / NOSCO2 V8



Non-woven premium paper (or textile)
Installation with pins or adhesive strips



Start by fixing your poster in the left corner with a drawing pin or adhesive strip.
Adjusting the verticality of your poster, and make sure it's level.
Then hang the right corner.
Finish by adding fasteners around the visual, every 30 cm.

Tip



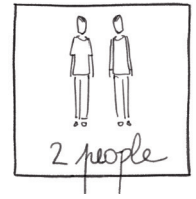
We have a number of drawing pins and tabs on sale right now on our website.



VERTICAL POSTER

USER MANUAL

Ref 02 / NOSC02 V8

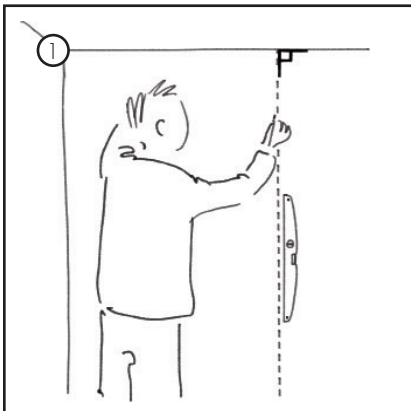
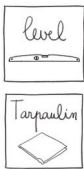


Non-woven premium paper (or textile)
Glued installation

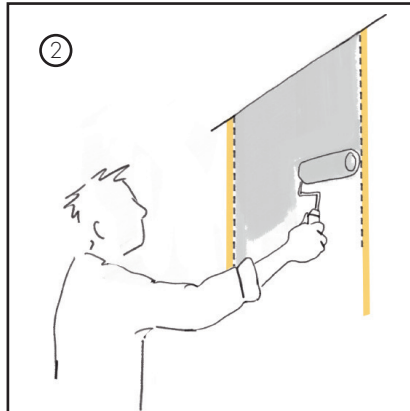
Materials
needed



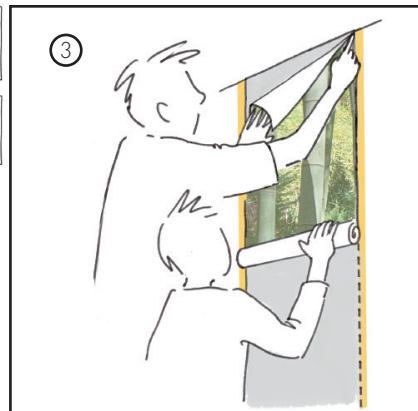
By gluing the wall



1 Draw a vertical line with a level.



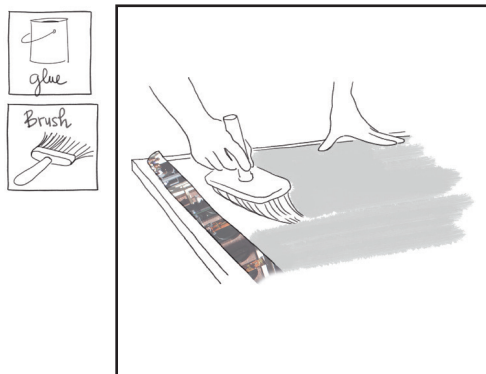
2 Glue the wall in protecting the edges with tape.



3 Place the poster.
Adjust to the layout.

By gluing the support

You can now glue your premium paper or textile material.



WHAT TYPE OF GLUE SHOULD I USE ?

NON-WOVEN PAPER :

We offer a non-woven backing that can be applied with any powdered adhesive intended for non-woven wallpapers. We recommend to use METYLAN Expert paste.

To get a very strong hold, you can use a white glue that is ready-to-use.

SCENOLIA recommends that you use the following white glues:

1/ For application on a normally absorbent surface (plaster, BA13, etc.): OVALIT TM

2/ For application on a non-absorbent surface (melamine, blocked paints, etc.): OVALIT ULTRA

TEXTILE BACKING :

To apply our textile backing, we recommend using a white paste available in DIY stores and wallpaper specialized shops....

SCENOLIA recommends that you use the following white pastes :

1/ For installation on a normally absorbent open base (plaster, BA13, etc.): OVALIT TM

2/ For installation on a non-absorbent base (melamine, blocked paint, etc.): OVALIT ULTRA

Application : powder and white pastes can be applied directly to the wall with a simple wool painting roll (anti-drip painting roll).

Make sure that the pastes used are suitable for your wall. Refer to the recommendations of the wallpaper paste manufacturers.

Warning: for installation in damp environments (kitchen, bathroom, SPA, etc...) check that the textile material is a suitable reference.

Do not install in areas where water is splashed.

SCENOLIA cannot be held responsible if you fail to comply with the recommendations.

SCENOLIA 
www.scenolia.com



Find our videos of installation on our
channel YouTube